



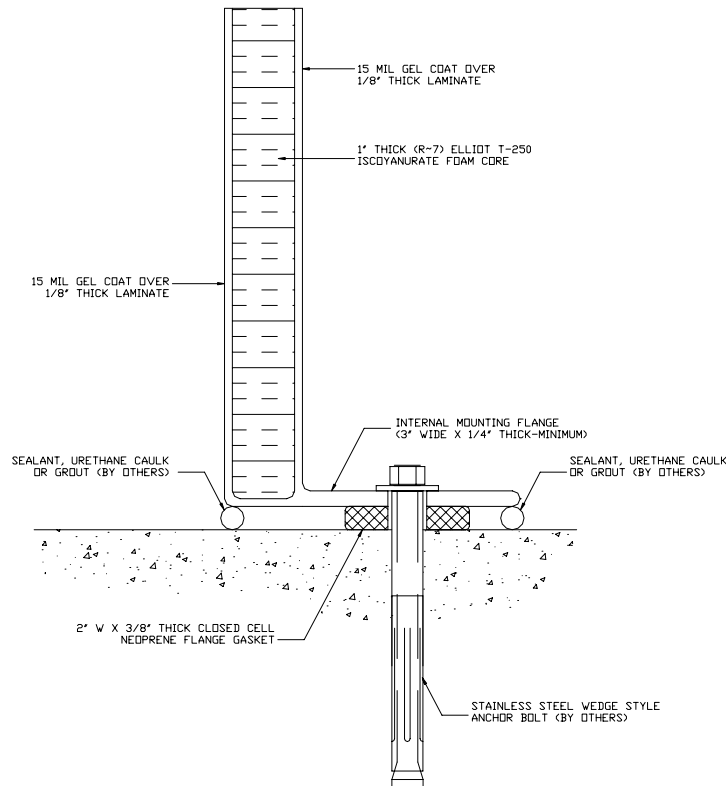
# ONE-PIECE BUILDING INSTALLATION INSTRUCTIONS

1. Verify that the concrete pad is level, true to plane, and of the correct dimensions to receive the structure. Correct all deficiencies before proceeding.
2. Install the product in accordance with the project engineer's instructions, plans, blueprints, local codes, and in a manner consistent with the installation instructions and recommendations of the manufacturer.
3. Familiarize yourself with the installation instructions as described in this document and as outlined above before proceeding with the installation.



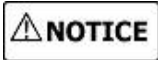
***DO NOT REMOVE THE DOOR SPACER(S) UNTIL ALL ANCHOR BOLTS HAVE BEEN COMPLETELY SET AND THE OPERATION OF DOOR HAS BEEN VERIFIED.***

4. Attach the removable lifting eyes to the building using the molded-in receiving nuts along the peak of the building.
5. Using a spreader bar, move and position the building using on the lifting eyes provided.
6. The neoprene gasket provided should be positioned between the concrete pad and the mounting flange before the building is lowered into position.





- 7. After closing the building door(s):
  - a. Layout the anchor bolt pattern. The anchor bolts should be installed on maximum center spacing of 24 inches (60,96 cm) or in accordance with the project engineer's instructions.
  - b. Starting on each side of the door(s), drill the anchor bolt holes through the mounting flange, the neoprene gasket, and into the concrete pad to the depth and diameter required by the anchor bolt manufacturer.
  - c. If the building has been supplied with an external mounting flange, flat head bolts should be used wherever the sweep of the door(s) crosses the mounting flange so as not to impede the opening or closing of the door(s).
  - d. Stainless steel wedge style concrete anchors [1/2 inch (1,27 cm) diameter x 4-1/2 inch (11,43 cm) long – (minimum)] are recommended. TRACOM does not recommend the use of pre-set anchor bolts. Anchor bolts are to be supplied by others.
  - e. Verify the operation of the door(s) before installing the remaining anchor bolts.



***FAILURE TO VERIFY THE OPERATION OF THE DOOR(S) BEFORE THE REMAINING ANCHOR BOLTS ARE SET MAY RESULT IN THE BINDING OF THE DOOR AGAINST THE DOOR FRAME.***

- f. Install the threshold (if supplied) and re-verify the operation of the door(s).
  - g. After all anchor bolts have been completely set, remove the door spacer(s).
- 8. Seal the mounting flange with sealant, urethane caulk, or grout to ensure a watertight installation.
- 9. Install (as necessary) and test the building accessories in accordance with the manufacturers' instructions.



***BUILDINGS ARE NOT INTENDED TO BE GAS TIGHT OR COMPLETELY CONTAIN GAS OR CHEMICAL SPILLS. CONSULT ALL APPROPRIATE LOCAL, STATE AND FEDERAL REGULATIONS BEFORE ENTERING.***

Document: OPB-I  
Revision: 0  
Date: 2-19-04  
By: Jon Wachter